



Polaris
Freedom
happens
now.

End Trafficking in Illicit Massage
Businesses Initiative

National Sexual Assault Conference
September 2, 2016



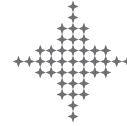
Polaris is a leader in the global
fight to eradicate modern
slavery and restore freedom to
survivors.





Exercise #1:

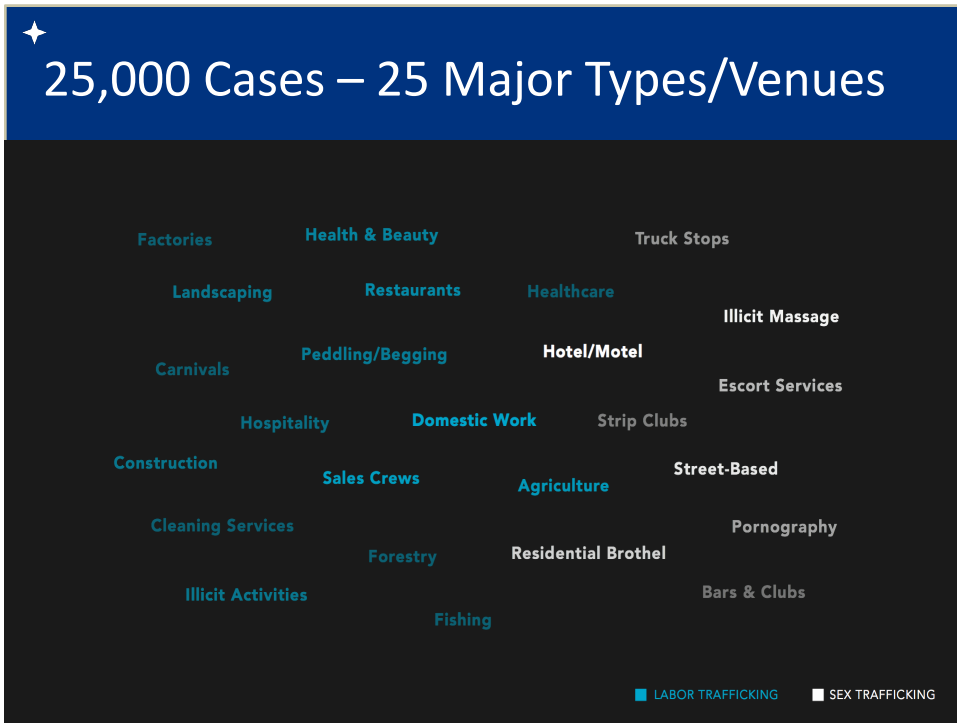
What do you think are some signs of human trafficking in the U.S.?



3

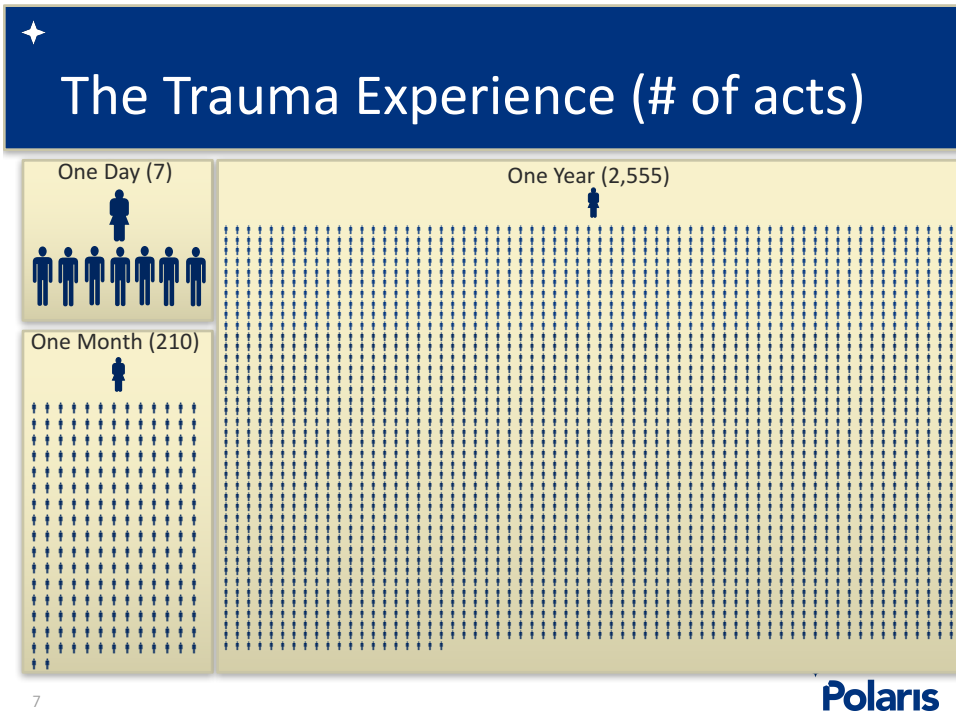
★ Human Trafficking Defined

Action	Means	Purpose
<ul style="list-style-type: none">• Recruits• Harbors• Transports• Provides• Obtains (or so attempts)	<ul style="list-style-type: none">• Force• Fraud• Coercion	<ul style="list-style-type: none">• Commercial sex act(s)• Forced labor or services



Exercise #2:
How do you think stereotypes and misconceptions about Illicit Massage Businesses affect the public?





7

✦ Who Are the Victims?

Older East Asian Women	<ul style="list-style-type: none"> Often in the network for years Average age of women in IMBs: 42, 64% over the age of 40* Countries include: Thailand, China, South Korea, Philippines
Younger East Asian Women	<ul style="list-style-type: none"> Brought into U.S. on various visas or smuggled illegally Indebted from transportation costs
Other Nationalities	<ul style="list-style-type: none"> These include women recruited from other countries, including Mexico, and countries in Central America and Eastern Europe
United States	<ul style="list-style-type: none"> Small percentage of overall number of women in illicit massage businesses

Polaris

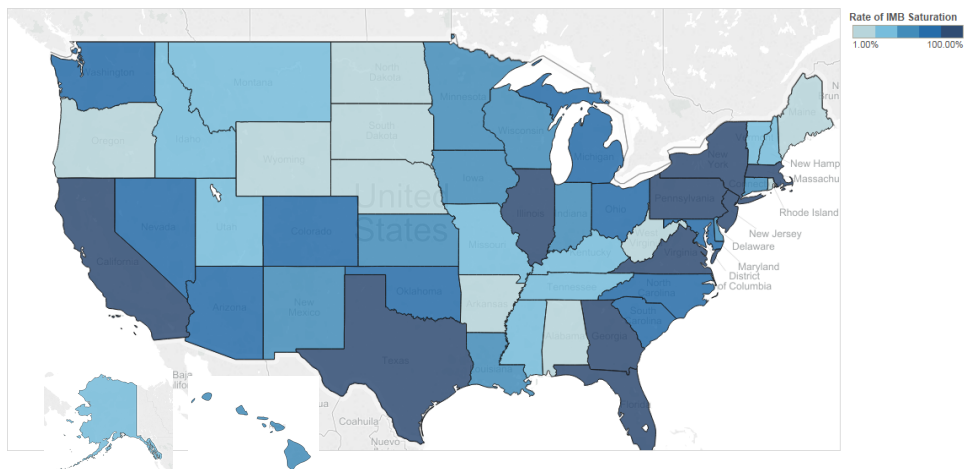
8

✦ Main Methods of Control

- ✦ Psychological Manipulation
- ✦ Financial Control
- ✦ Physical Isolation
- ✦ Controlled Movement

9

✦ Estimated 6,000 – 9,000 IMBs nationwide



10



Exercise #3:

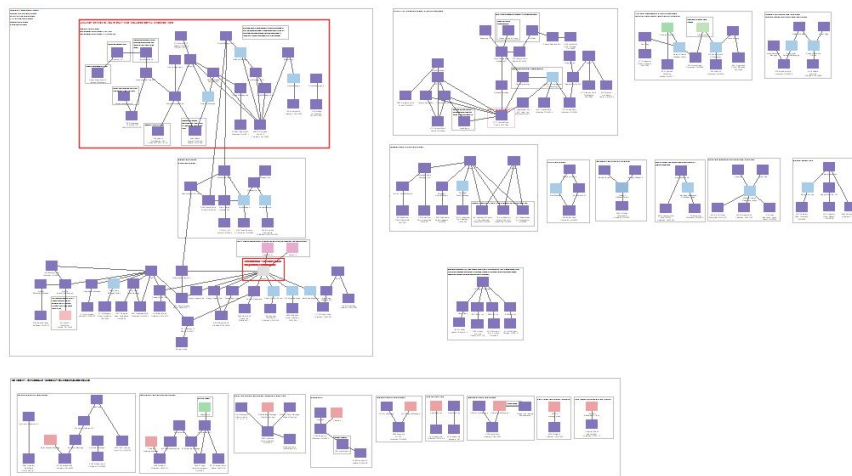
We have received reports of survivors going to Sexual Assault/Domestic Violence shelters or mental health providers

What would indicate a potential IMB trafficking survivor?



11

Illicit Massage Businesses are Networked Organizations



ANALYSIS POWERED BY
 Palantir





End Trafficking in Illicit Massage Businesses

To eliminate a trafficking network, we
need to build a disruption network

Respond, Equip, Disrupt





Challenges for Law Enforcement

- Potential victim disengagement
 - Reactions due to trauma
 - Lack of self-identification
 - Negative views of law enforcement
 - Fear of stigma and consequences of admitting to performing commercial sex acts
- Work/immigration status
- Connecting women to services

15



Solutions for Law Enforcement

- Case studies and promising practices
- Trainings and consultations on:
 - Investigations
 - Prosecutions
 - Network mapping
- Connecting to service providers

16





Challenges for Service Providers

- Establishing trust with potential victims
- Inflicting unintended trauma – need for cultural competency and trauma-informed counseling unique to this group
- Determining victim hierarchy of needs
 - Most potential victims do not prioritize housing
 - Potential victims often want to return to NYC or LA
- Economic empowerment

17



Solutions for Service Providers

- National network of service providers
 - Interpreters
 - Legal Services
 - Case Management
 - Emergency Services
- Potential victim outreach materials
- Trainings and Resources

18





Exercise #4:

What do you need to facilitate collaboration and coordination with Polaris and the Initiative?



19

Polaris
Freedom happens now.

Rochelle Keyhan
Strategic Initiative Director
rkeyhan@polarisproject.org

Meghan Carton Strategic Initiatives Specialist mcarton@polarisproject.org	Oriene Shin Strategic Initiatives Specialist oshin@polarisproject.org
---	---